

Cartridge & Cart35

Overview

Cartridge & Cart35

Brother no longer manufactures...



Brother Stitch Pattern Cartridge III

Brother Design System Cartridge

Cartridge & Cart35

Still manufactured...

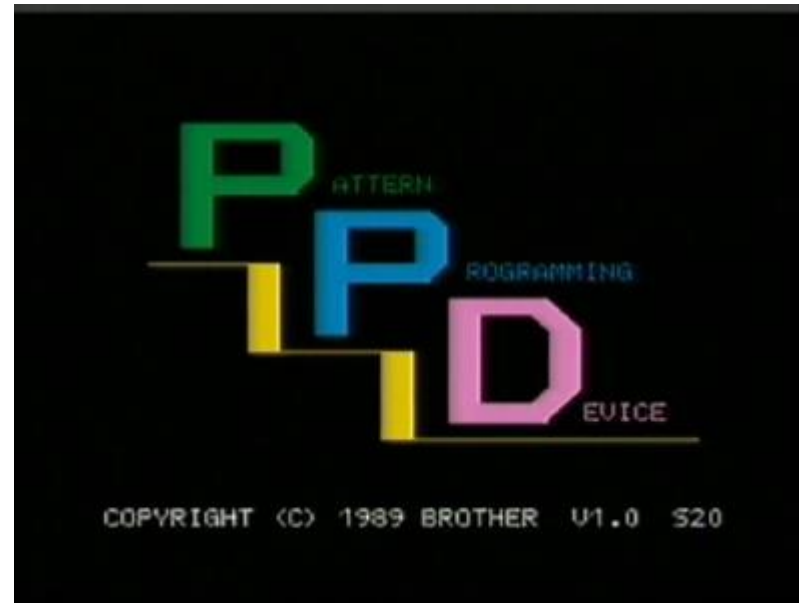


100 % compatible

Cartridge & Cart35



Cartridge - Stitch Pattern Cartridge III



Cart35 – Design System cartridge

Cartridge & Cart35



Cartridge and Cart35 are based on the same hardware.
The difference between the 2 models is the PPD software loaded.

Cartridge is prepared with Stitch Pattern cartridge III software
Cart35 is prepared with Design System Cartridge software

The only functional difference you can see looking at the front is the LED which is bicolor.
At startup of either the knitting machine or the PPD the LED will flash red and green after which the LED goes off.

During read the LED shows green; during write the LED shows red.

The memory the knitting machine/PPD can use in Cartridge is 32K.
We use the term Brother Pattern Memory (BPM)

Cartridge & Cart35



The significant differences between a Brother Stitch Pattern cartridge and Cartridge & Cart35 is on the back of cartridge.

In the red circle you see a USB port. The USB port can be used to communicate with your computer. Cartridge Utility, the software that comes with Cartridge & Cart35, provides 3 basic functions that use the USB port:

1. Read the contents of the Brother Pattern Memory area in Cartridge
2. Write the contents of the Brother Pattern Memory area in Cartridge
3. Format the contents of the Brother Pattern Memory for use in your knitting machine.

The first function that springs into mind is that this way you can make backup of the contents of your Cartridge without the need of a PPD and an FB100 + floppies.

Cartridge Utility also provides functionality to maintain BPM files.

Cartridge & Cart35

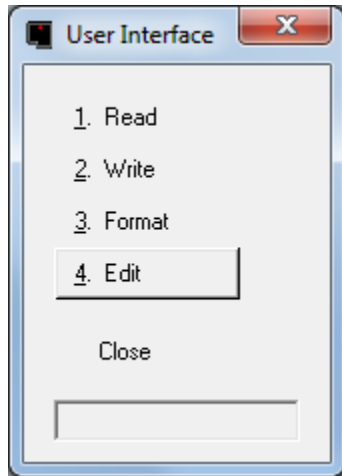


The second difference on the back of Cartridge is marked with a red circle. You see there an 8 pin connector.

Using the IK option you can turn your Cartridge into a Screenlink. The IK option is only useful for DesignaKnit users.

Cartridge & Cart35

The software functions that use the USB port:

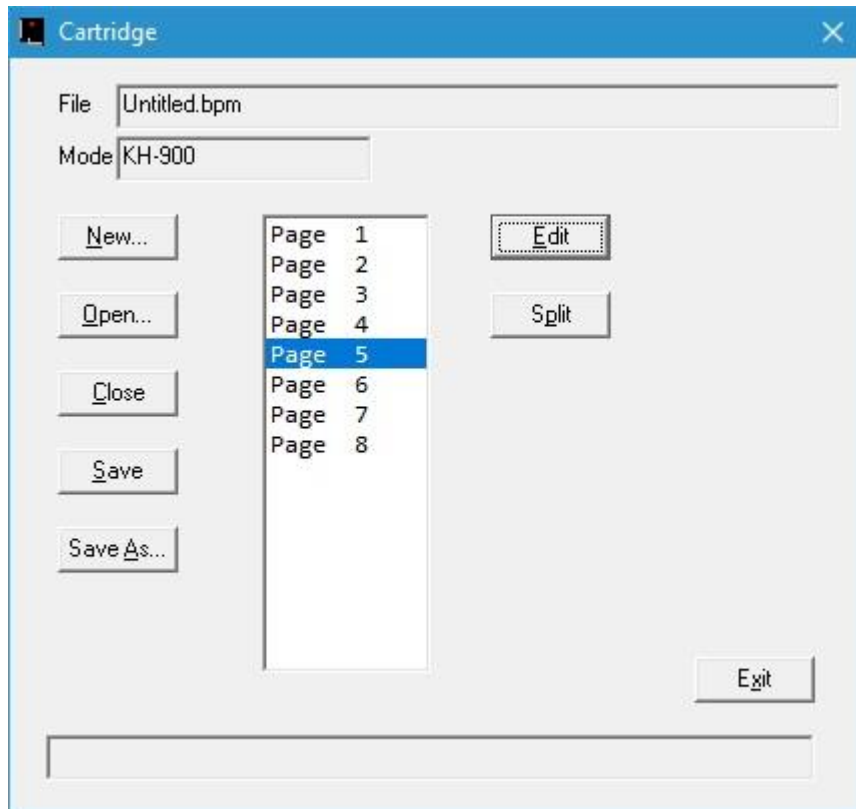


1. Read contents of Brother Pattern Memory
2. Write contents of Brother Pattern Memory
3. Format brother Pattern memory for your machine

The Edit function is for maintenance of Brother Pattern Memory files.

Cartridge & Cart35

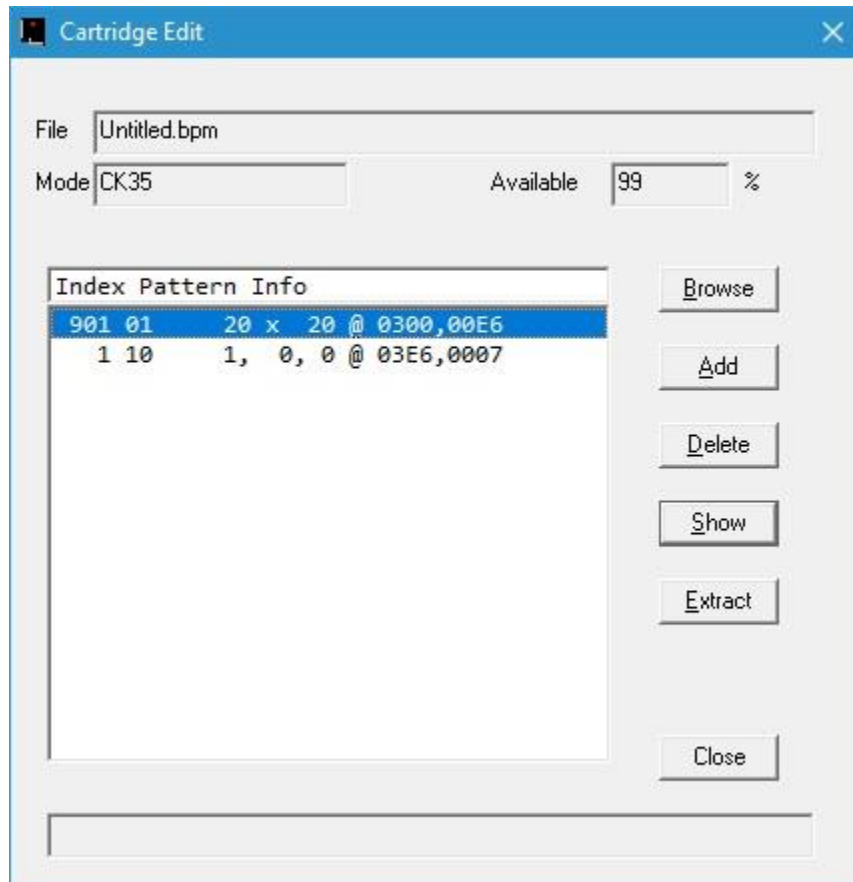
Edit Brother Pattern Memory file:



- New: create a empty BPM file for your machine
- Open: open an existing BPM file
- Close: close the current BPM file
- Save: save the current BPM file
- Save as: save the current bpm file under a different name
- Edit: maintain the selected page
- Split: extract all patterns on all pages and store them on your computer.

Cartridge & Cart35

Edit page of Brother Pattern Memory file



Browse: display pictures of patterns

Add: add pattern to page (also block for CK35)

Delete: delete pattern from page

Show: display a picture of the selected pattern
(also block info for CK35)

Extract: store the selected pattern as a Pat or STC pattern
on your computer

Cartridge & Cart35

Machine	Slot	PPD	CartUtil	Pages
KH-900	Yes	Yes	Yes	8 x 4K
KH-930(E)	No	Yes	Yes	16 x 2K
KH-930M	No	Yes	Yes	4 x 8K
KH-940	No	Yes	Yes	1 x 32K
KH-950i	No	Yes	Yes	1 x 32K
KH-965	Yes	Yes	Yes	1 x 32K
KH-965i	Yes	Yes	Yes	1 x 32K
KH-970	Yes	No	Read only	1 x 32K
CK-35	Yes	Yes	Yes	1 x 32K
KH-270	Yes	Yes	Yes	1 x 32K

Slot: Machine has cartridge slot

PPD: the PPD can program the Cartridge for the machine

CartUtil: Cartridge Utility can program the Cartridge for the machine

Cartridge & Cart35

Cartridge can be customized to emulate one of these cartridges:

- Stitch Pattern Cartridge
- Stitch Pattern Cartridge II
- Stitch Pattern Cartridge III
- Multi Colour Cartridge
- Lace Cartridge
- Stitch Pattern Cartridge Extra's
- Design System Cartridge

Cartridge & Cart35

Cartridge can be customised to emulate one of the Brother stitch pattern cartridges mentioned earlier.

The customisation is free of charge. Please visit:

https://webshop.designaknitlink.nl/index.php?item=cartridge&action=page&group_id=26

Click on the name of a cartridge to see which variants of the Brother stitch pattern cartridge are available. In case you want a customisation of a Brother cartridge not in our list of cartridges and you have the original Brother cartridge, we will do this for you free of charge.

Cartridge & Cart35

Website: <https://cartridge.knitandsew.nl/>

Resellers found on the internet:

IBB <https://ibab.nl/ibb/en/cartridge.html> & <https://ibab.nl/ibb/en/cart35.html>

Distinctive Knits <https://store.dknits.com/pd-brother-super-cartridge.cfm>

brother2live.com <https://brother2live.com/dk9/kabeli>

Soft Byte <https://softbyte.co.uk/cablelinksbrother.htm#UsbBro4>