

- [PPD Print Utility Documentation](#)
 - [Functions](#)
 - [Hardware](#)
 - [PPD Print Utility](#)
 - [Starting PPD Print Utility](#)
 - [Menu](#)
 - [Configuration](#)
 - [Ports](#)
 - [Getting Started](#)
 - [Operation](#)
 - [SPC](#)
 - [SPC II](#)
 - [SPC III](#)
 - [Multi Color](#)
 - [Lace](#)
 - [Design System](#)
 - [Close](#)
 - [Messages](#)
- [Dialog Manager explained](#)
 - [Introduction](#)
 - [Buttons](#)
 - [Fields](#)
 - [Multiline fields](#)
 - [Tablebox](#)
 - [Tickbox](#)
 - [Access Keys](#)
 - [Scrollbar](#)
 - [Initial Focus en Tab Order](#)
 - [Coloring](#)

PPD Print

PPD Print

Thank you for purchasing our PPD Print product.

This HTML Help file provides the documentation for the PPD Print product.

The first part of this document provides information about the functionality of the PPD Print product. You can also find instructions on how to operate PPD Print Utility in the first part of this document.

The second part of this document provides information about Dialog Manager, the package used to develop PPD Print Utility, the driver program of the PPD Print product.

Last Modification: June 30, 2016 © 2005,2016 [Computerservice SSHS BV](#).

PPD Print

Functions

The PPD Print connects the printer port of your PPD with your PC via a USB port.

The following functions are provided by the driver program:

- Capture output from your PPD and store the captured data in a file on your computer
- Convert a file stored on your computer into one or more bitmaps
- Generate a html file for the captured data.
- Show the html in your default browser.

The PPD Print has 2 connectors: a mini Centronics connector to connect to the printer port of your PPD and a USB type A connector to connect to a USB port on your PC.



Two LED indicators are provided to monitor the traffic to and from the Brother PPD:

1. a red/green LED indicator that registers traffic from the PPD to the PC
2. a green LED indicator which shows that power is applied to the PPD Print

PPD Print

Hardware

PPD Print can capture printer output for the following PPDs:

- PPD-100
- PPD-110
- PPD-120
- PPD-35.

PPD Print supports the following cartridges

- Stitch Pattern Cartridge
- Stitch Pattern Cartridge II
- Stitch Pattern Cartridge III
- Multi Color Cartridge
- Lace Cartridge
- Design System Cartridge

PPD Print

PPD Print Utility

PPD Print Utility is the driver program for the PPD Print.

You can browse your computer for the folder to store the printouts from your PPD.

You can also provide a filename for the printouts.

PPD Print Utility wil generate bitmaps and html to show the printout in you favorite browser.

Last Modification: June 30, 2016 © 2005,2016 [Computerservice SSHS BV](#).

PPD Print

Starting PPD Print Utility

The PPD Print is operated by PPD Print Utility.

Follow these steps to start PPD Print Utility:

1. Press **Start**
2. Press **Programs**
3. Press **Cartridge**
4. Press **PPD Print Utility**
5. The main dialog of PPD Print Utility will be displayed

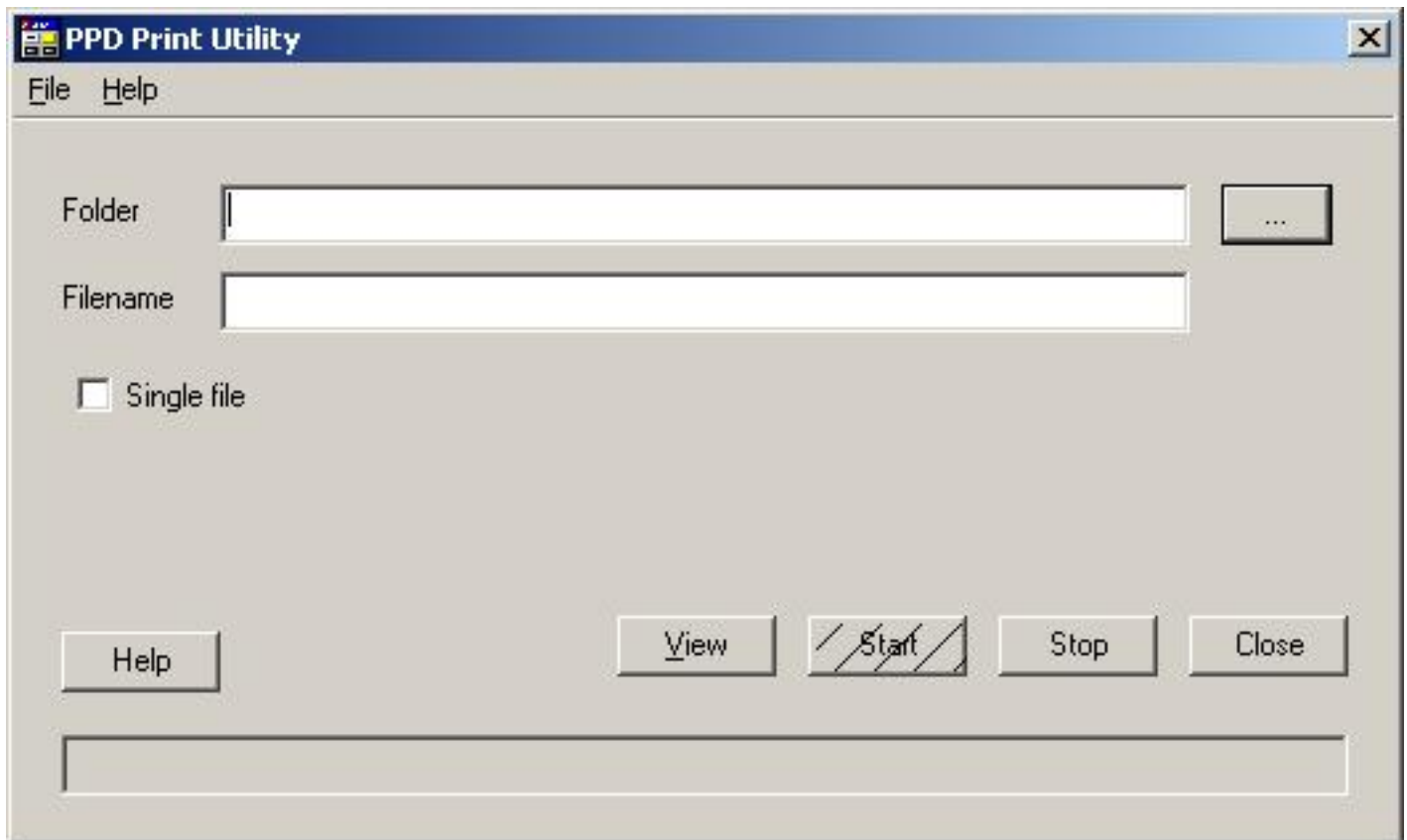


Figure 1

PPD Print

Menu

On the Menu Bar you will find two items: the File Menu and the Help Menu.

File Menu

[Start](#) to start recording PPD output

[Stop](#) to stop recording PPD output

[Exit](#) to exit PPD Print Utility

Help Menu

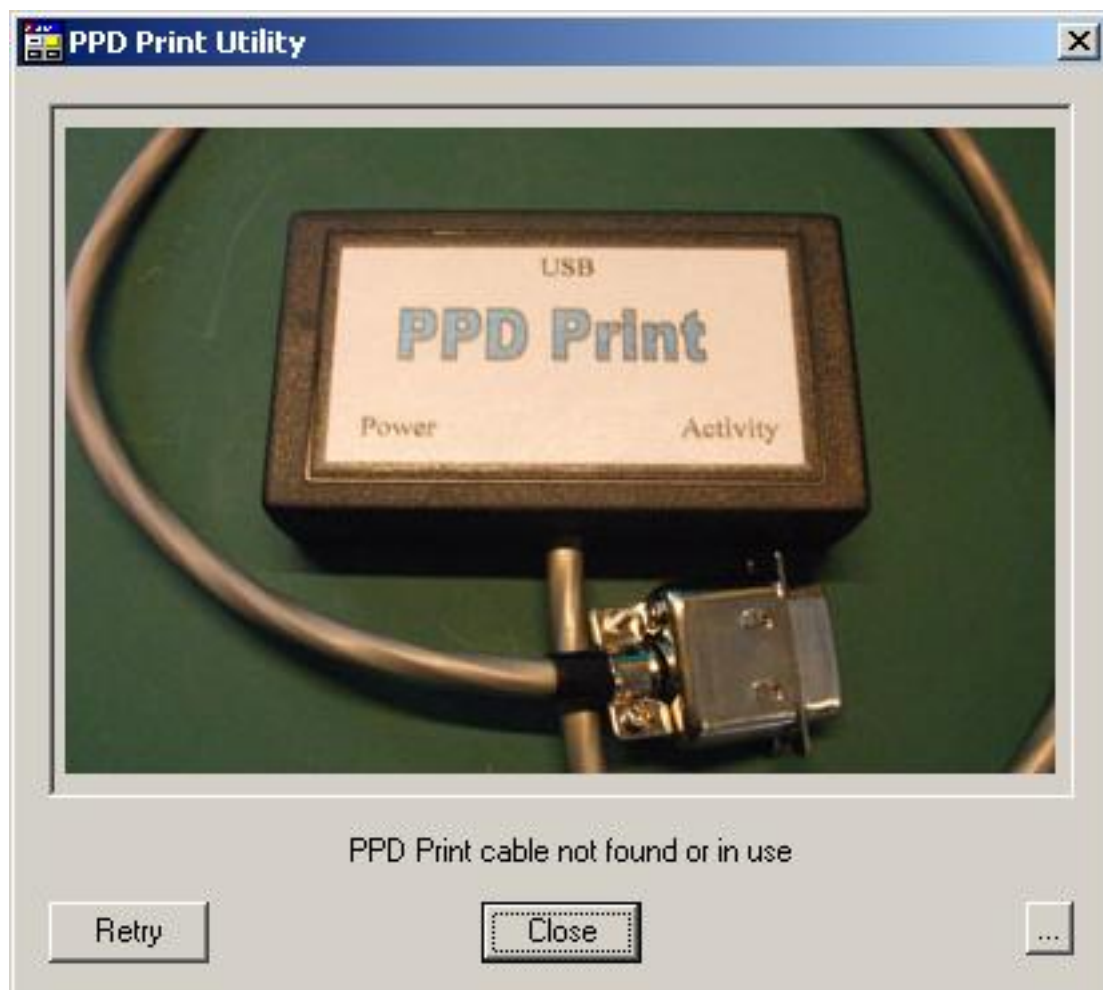
Contents to display the main help topics

[About PPD Print...](#) to provide information about PPD Print Utility

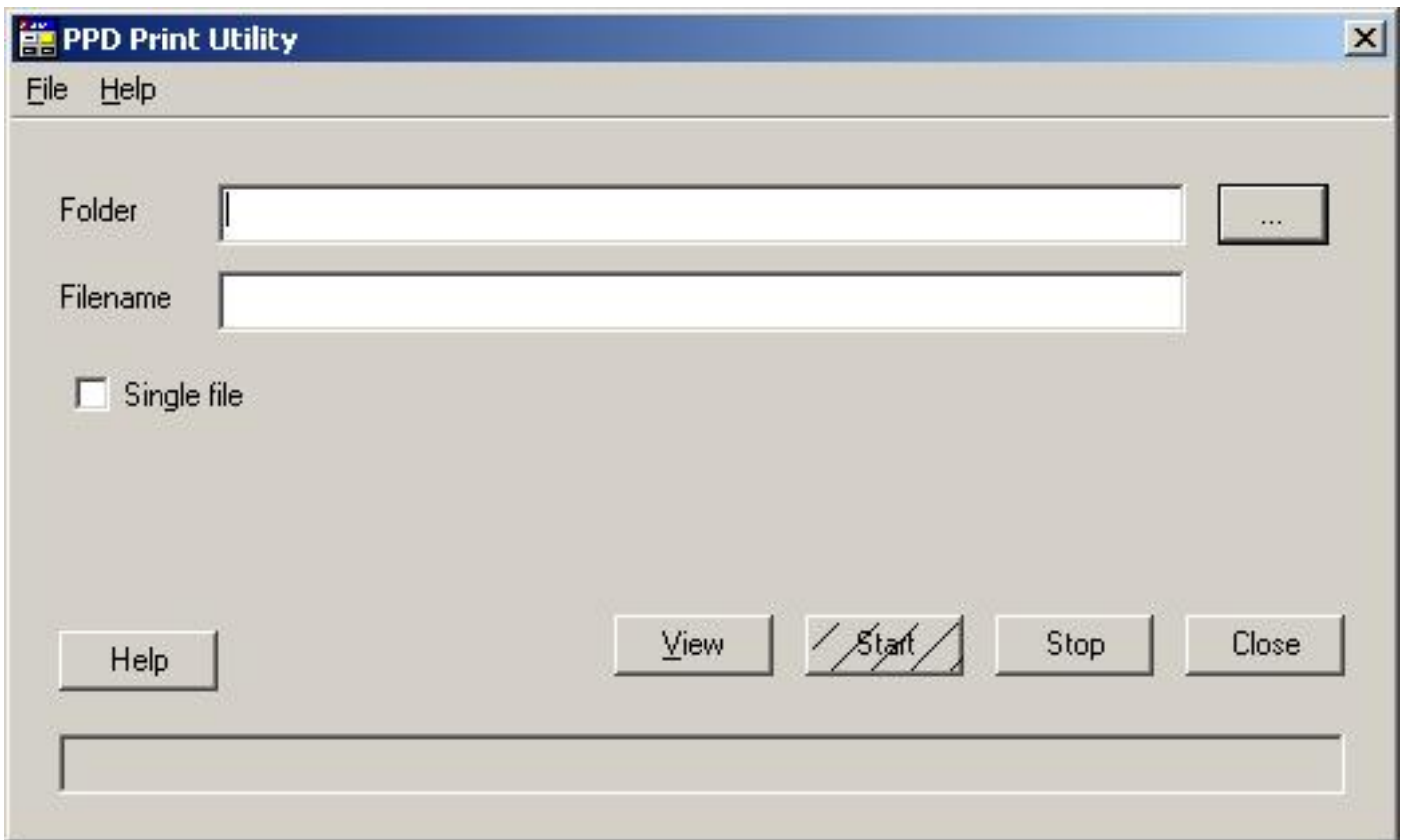
PPD Print

Configuration

Before starting PPD Print Utility, you need to make sure you have the PPD Print device hooked up to your PC. In case the PPD Print is not connected, you will see the message below.



The buttons on the "cable not found" dialog are explained in the [Ports](#) topic.



You can show this help file by pressing the **Help** button.

The Folder field shows the name of the folder last used to store printouts. You can configure this using the ... button.

The Filename field shows the name of the file where the printout will be stored without extension. You can type a filename here. When recording is done to multiple files, a sequence number is appended to the filename.

You [close](#) the PPD Print Utility application by pressing the **Close** button or the cross in the top right corner of the dialog box.

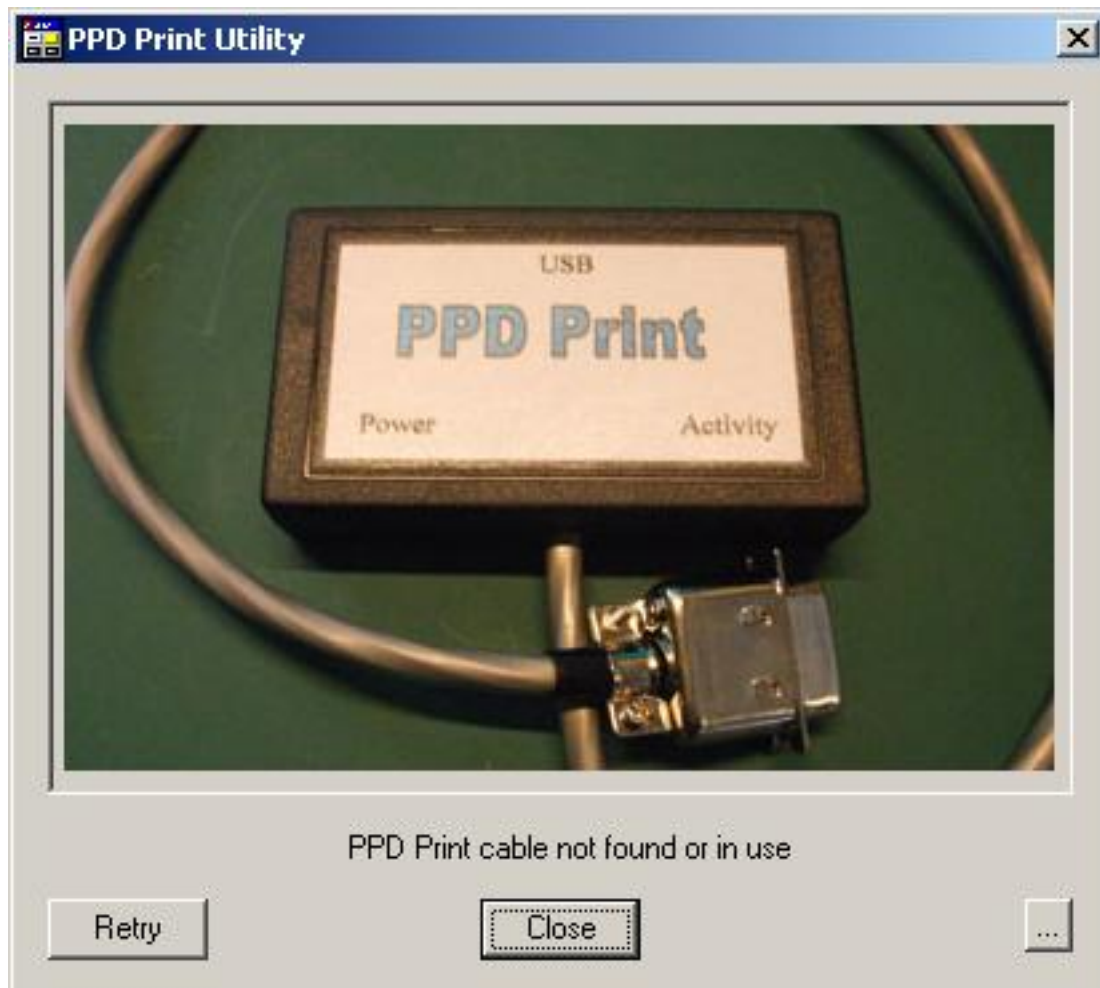
The **Start** and **Stop** buttons are explained in the [Operation](#) topic.

The Status field shows messages to inform the user of progress or to give instructions.

PPD Print

Ports

It can happen that you forgot to hook up your PPD Print device to your PC. You will see the "cable not found" dialog.



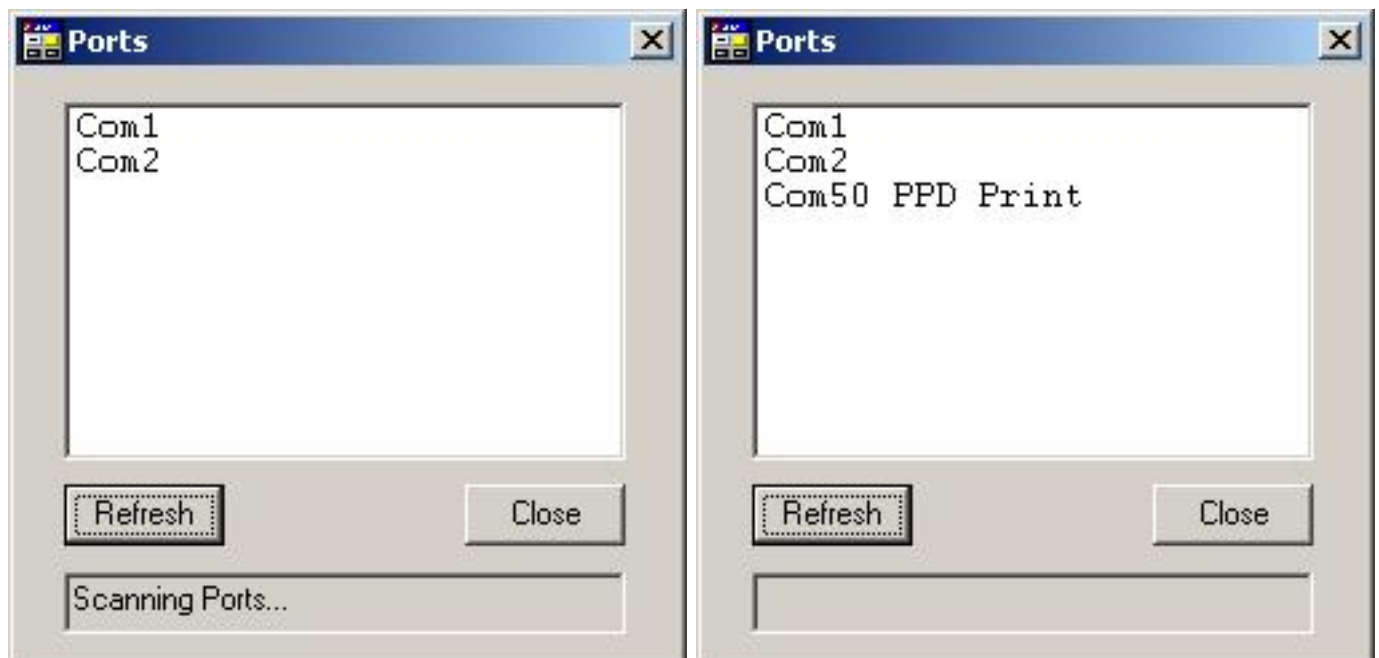
When you forgot to connect the PPD Print device, you can connect it at this point, wait a short while until Windows installs the device drivers and press **Retry** to try with the just connected PPD Print cable.

You can verify the PPD Print is hooked up to your computer by pressing the ... button.

The Ports dialog will be displayed and as the picture below shows there are Com1 and Com2, but no sign of a PPD Print port.



Connect the PPD print device to your pc and press the **Refresh** button.



You see that during the scan the PPD Print port got added. When you remove the PPD Print device, the entry for PPD Print will disappear from the list. This way you can test whether your PPD Print device will create a com port or not.

PPD Print

Getting Started

Parts list

1. [PPD Print](#)
2. CD ROM with PPD Print Utility software, test program and USB drivers

Software Installation

Note: INSTALL THE SOFTWARE BEFORE YOU CONNECT THE PPD PRINT TO THE COMPUTER

1. Put the USBLinks installation CD in the CD ROM drive
2. The USBLinks installation program will start automatically
3. When autorun is not enabled on your computer, look for the CD and double-click autoplay.exe in the root of the CD
4. Follow the instructions on the screen, the InstallShield installation wizard will guide you through the process

Note 1: It is recommended to install PPD Print Utility to the suggested folder.

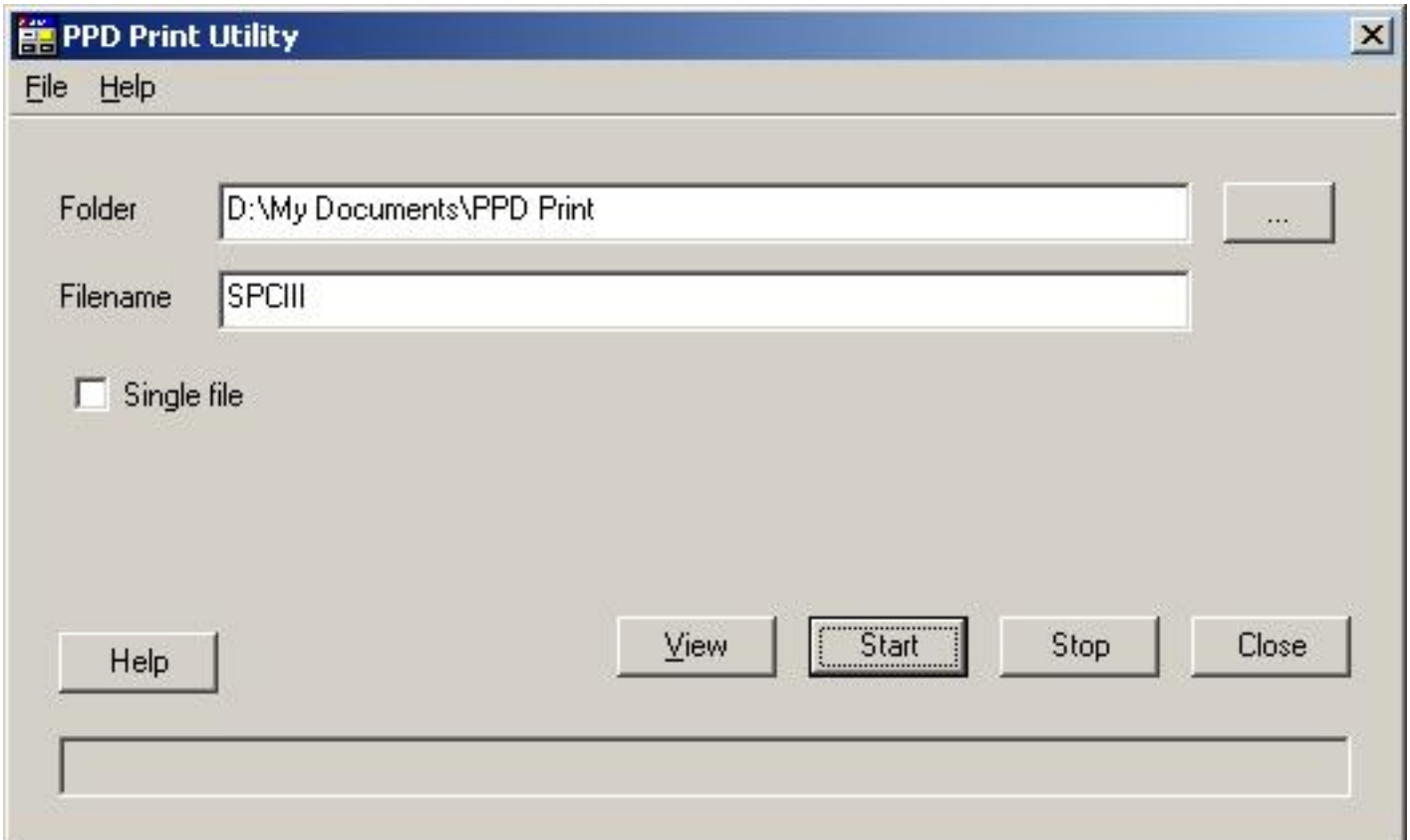
Hardware Installation

1. Connect the [A](#) connector of the PPD Print to a free USB port on your computer
2. Check the green light to go on; the red/green light will be green -> red -> off.
3. Windows will indicate "New hardware found"
4. Preferably let Windows search for the drivers
5. If not found, tell Windows that the drivers are on the CD ROM
6. If Windows indicates that the drivers are not compatible, press "Continue anyway"
7. The USB Serial Converter is now installed
8. Windows will indicate again "New hardware found"
9. Preferably let Windows search for the drivers
10. If not found, tell Windows that the drivers are on the CD ROM
11. If Windows indicates that the drivers are not compatible, press "Continue anyway"
12. The USB Serial port is now installed
13. The installation has finished now
14. On some systems a restart is required after the installation of the USB drivers
15. Connect the [Centronics](#) connector of the PPD Print to the printer port at the backside of your PPD.
16. The red/green led will be red if the PPD is turned off, otherwise the red/green led will stay off.

PPD Print

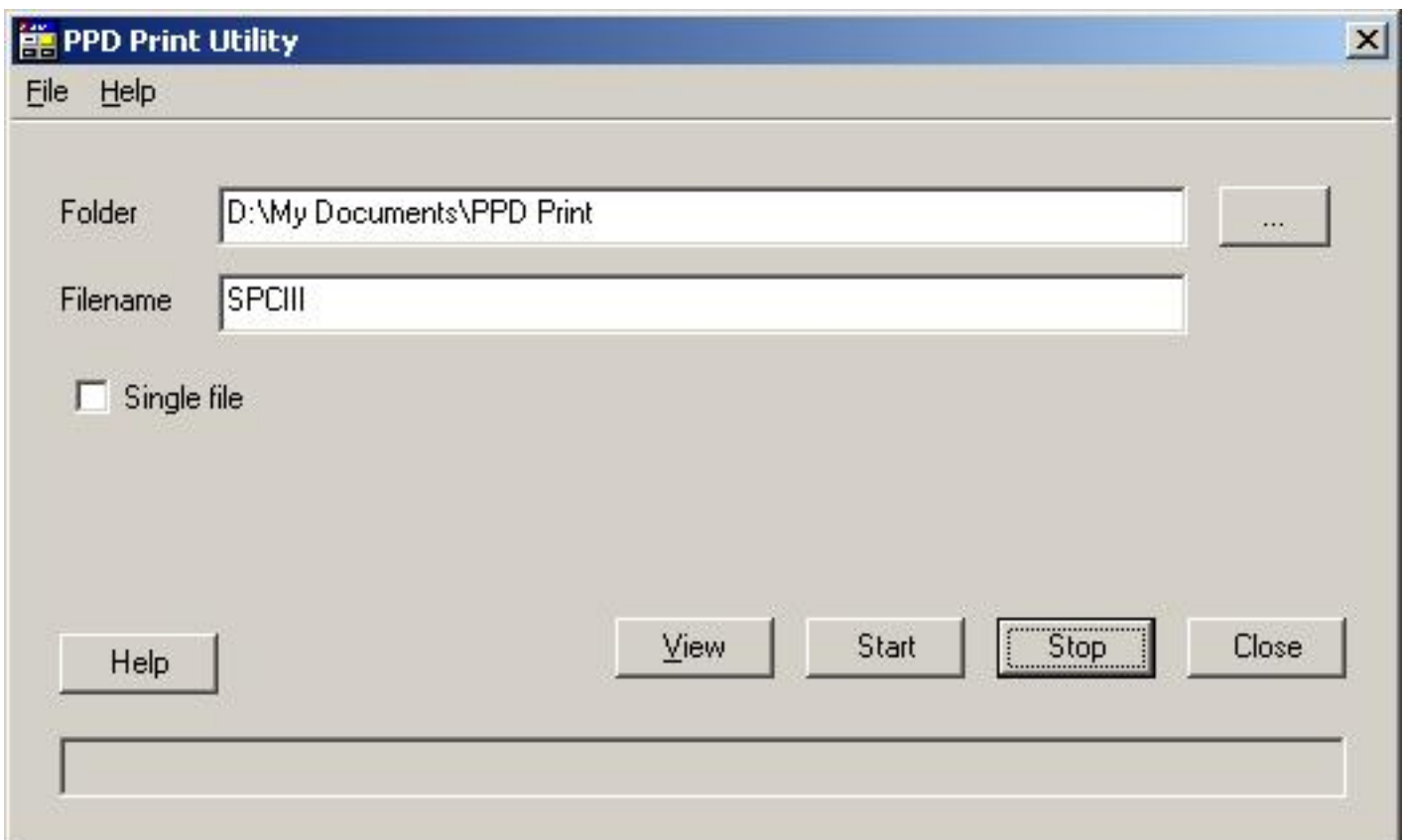
Operation

Using the PPD print product you can capture the output of your PPD that would normally go to a physical printer.

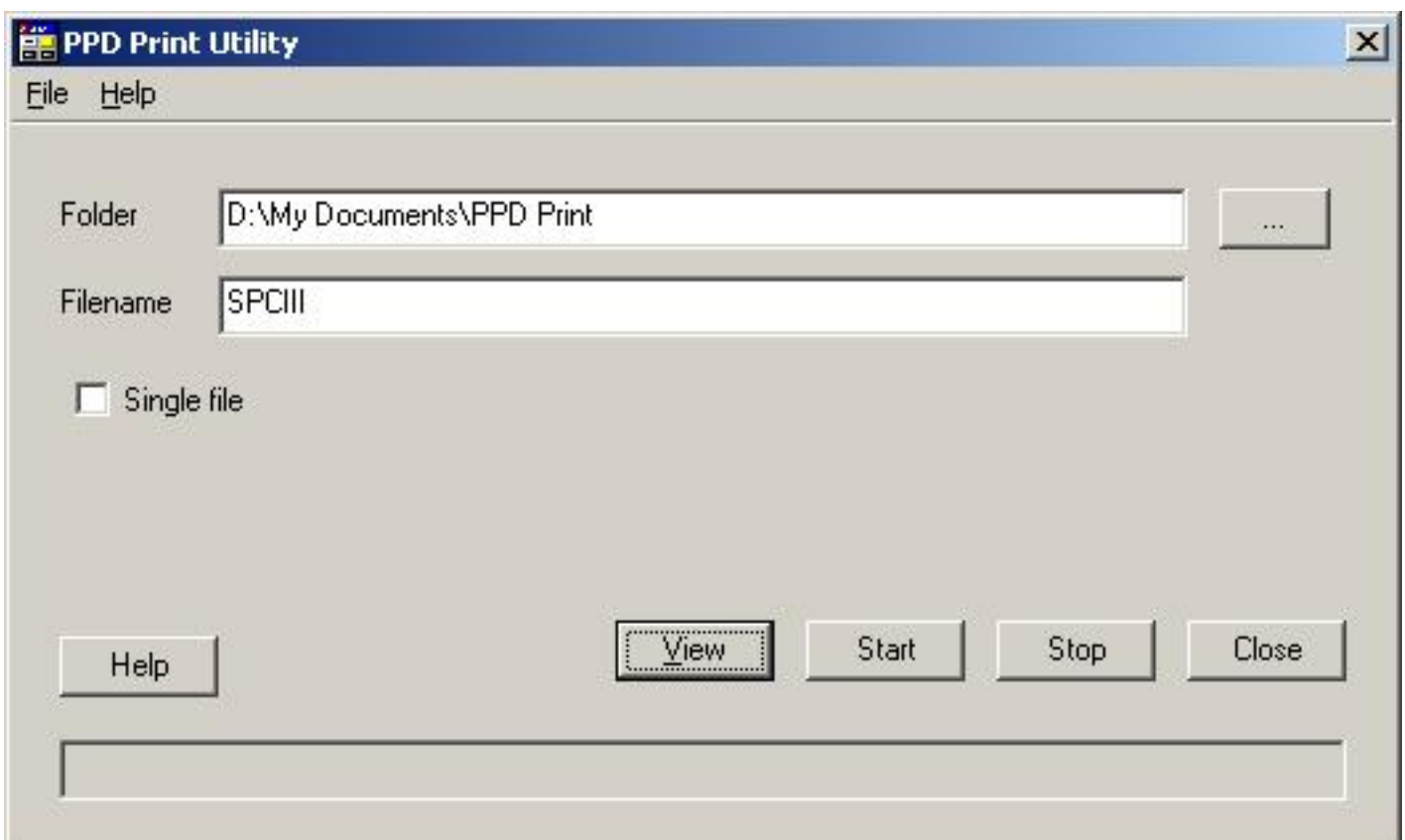


Before using one of the print functions of your PPD, you start the capture by pressing the **Start** button. The status line will show "Waiting for printout". Data will be recorded in a file as specified in Folder, Filename and SingleFile fields.

You can now use the print functions on your PPD. In case you print multiple pages, press **Step** on your PPD when asked whether the paper is inserted.



When you're done printing, use the **Stop** button to stop the recording. All recorded data is written in one or more .cpt files. A .bmp file is created for every page printed. You can use these .bmp files in your text processing package.



Also, a .html file is created which you can show in your default internet browser by pressing the **View** button on the main PPD Print dialog.

The red/green led will be red while the PPD is printing.

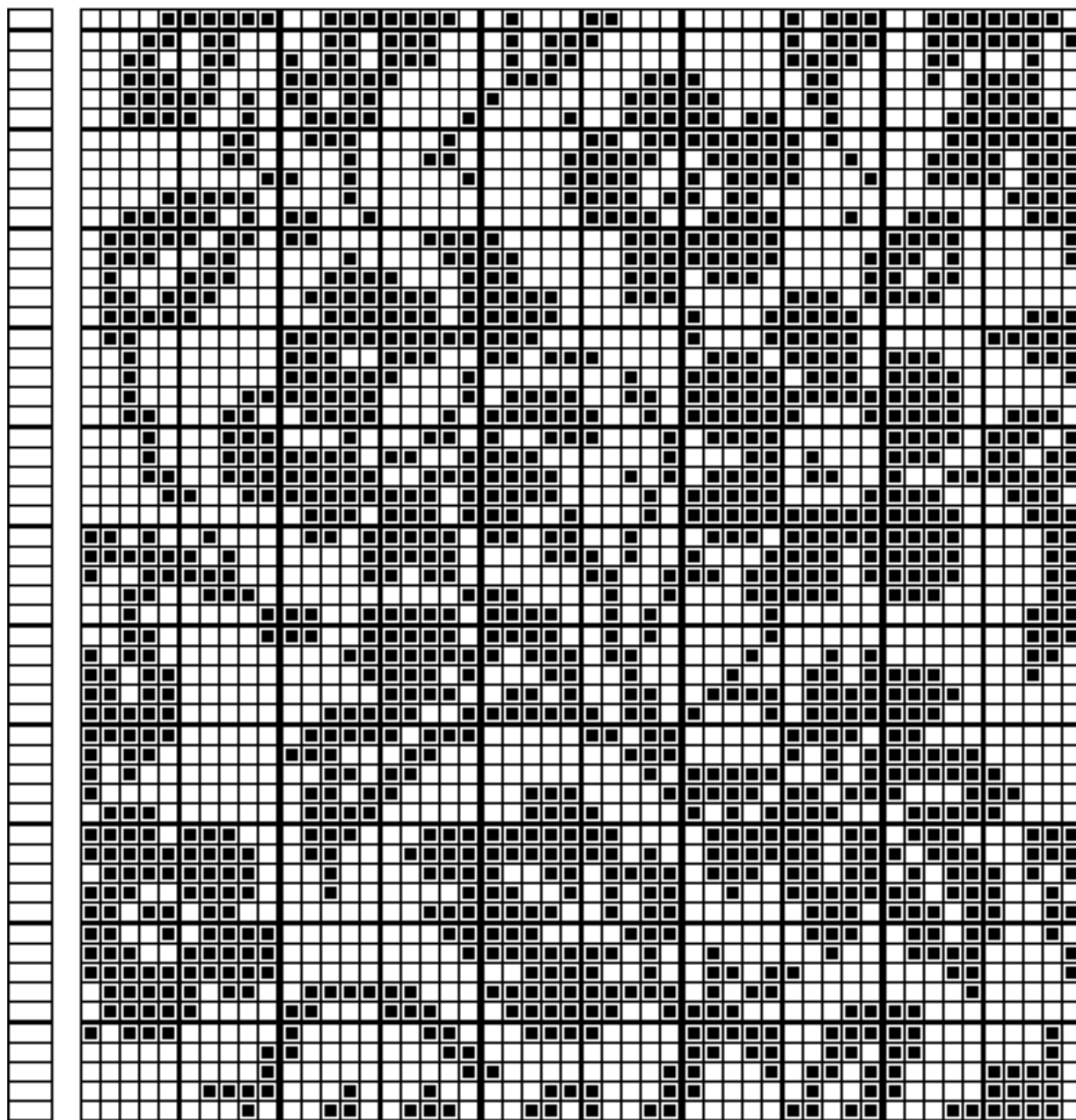
PPD Print

Stitch Pattern Cartridge I

The picture below shows the first page of the output captured for a Stitch Pattern Cartridge.

Diskette-nr. = Spoonnr. = Patroonnr. =901 Pag. (1- 1)

Steken = 60 Pen = 56

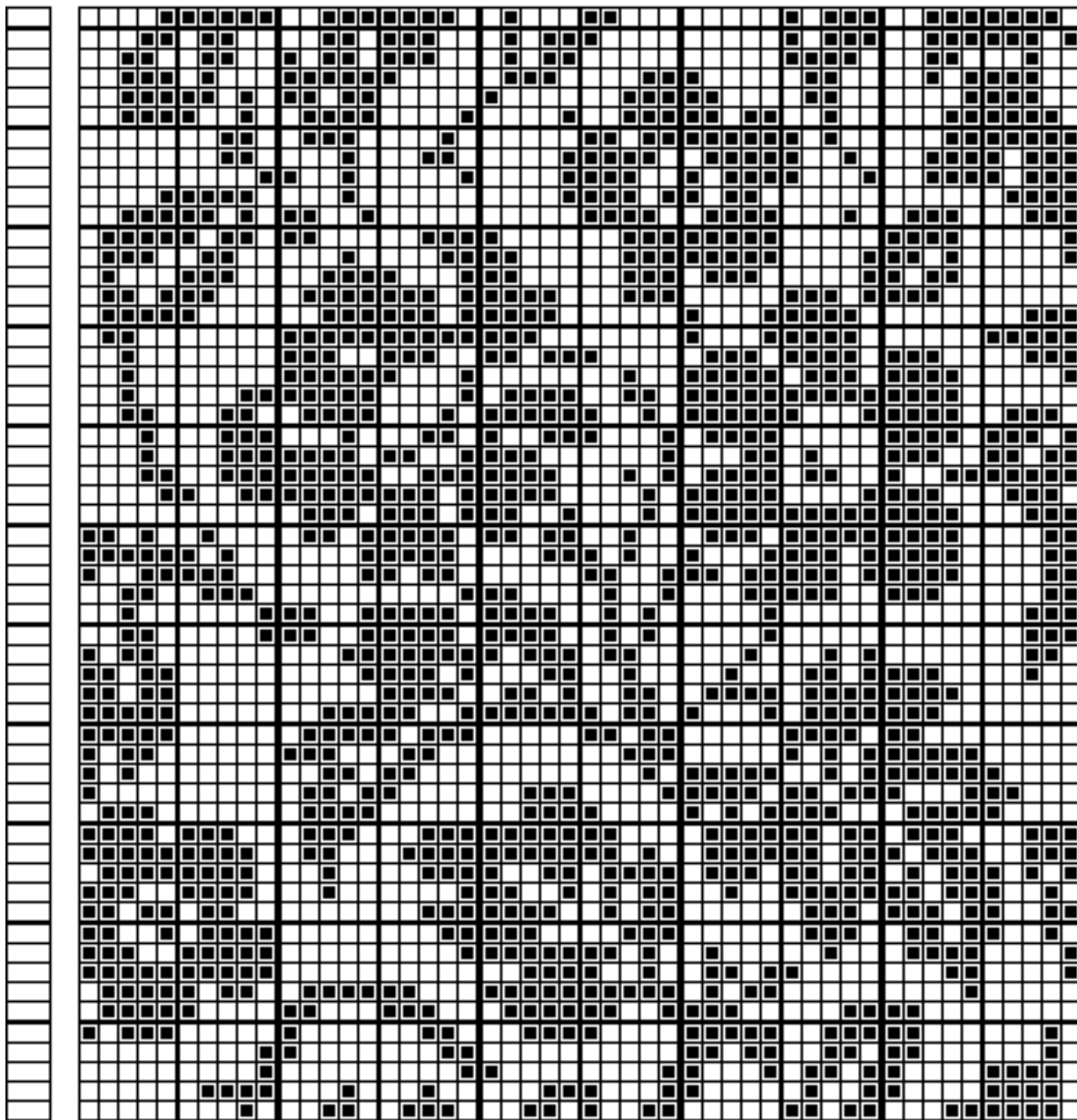


PPD Print

Stitch Pattern Cartridge II

The picture below shows the first page of the output captured for a Stitch Pattern Cartridge II.

DISC No. = TRACK No. = PAGE No. = 1 PATTERN No. =906
STITCHES = 60 ROWS = 56 PRINTING ORDER (1- 1)

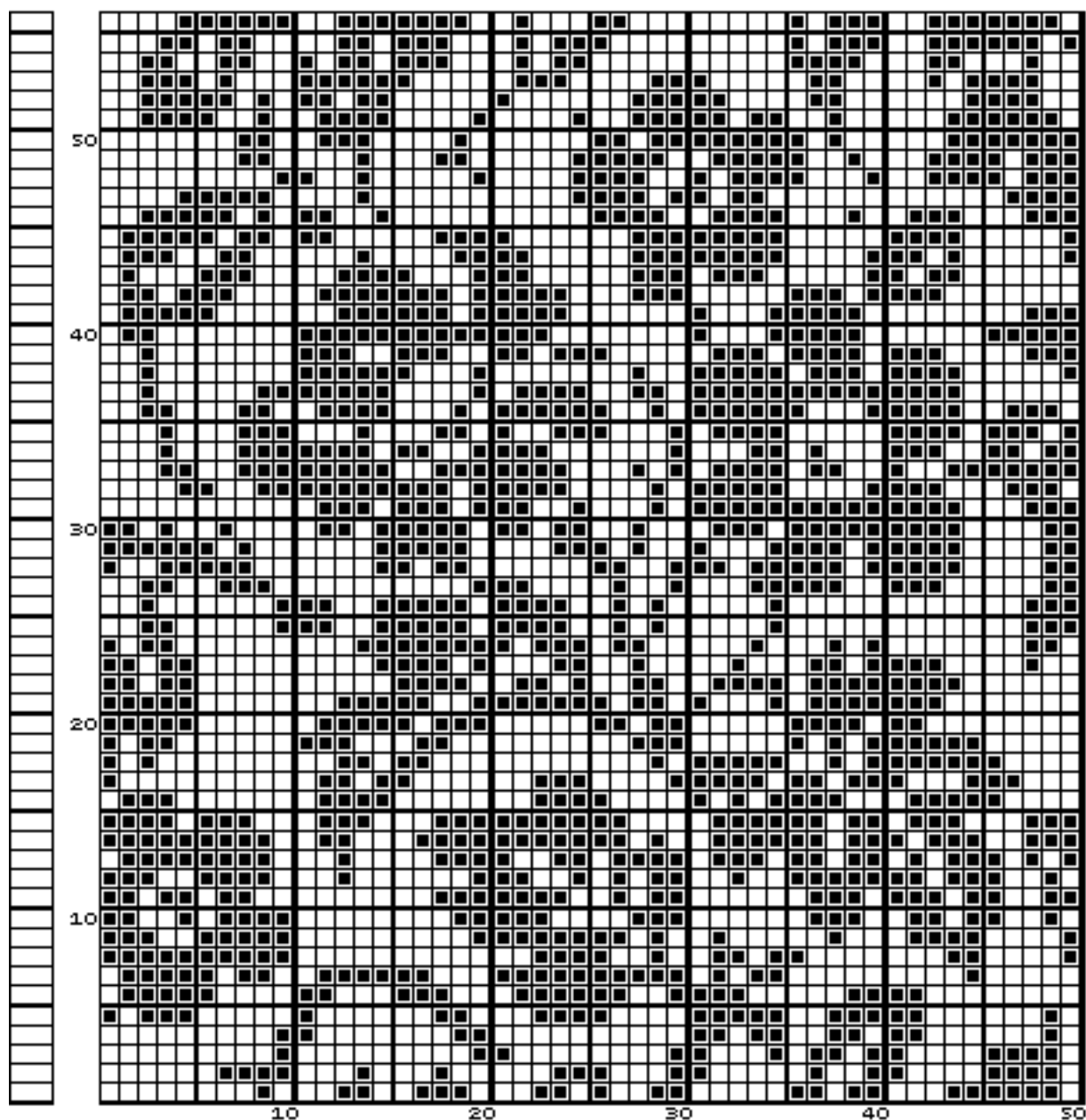


PPD Print

Stitch Pattern Cartridge III

The picture below shows the first page of the output captured for a Stitch Pattern Cartridge III.

EXTERNAL MEMORY No. = EXTERNAL PAGE No. = PAGE No. = 1
PATTERN No. =905 STITCHES = 60 ROWS = 56
PRINTING ORDER (1- 1)



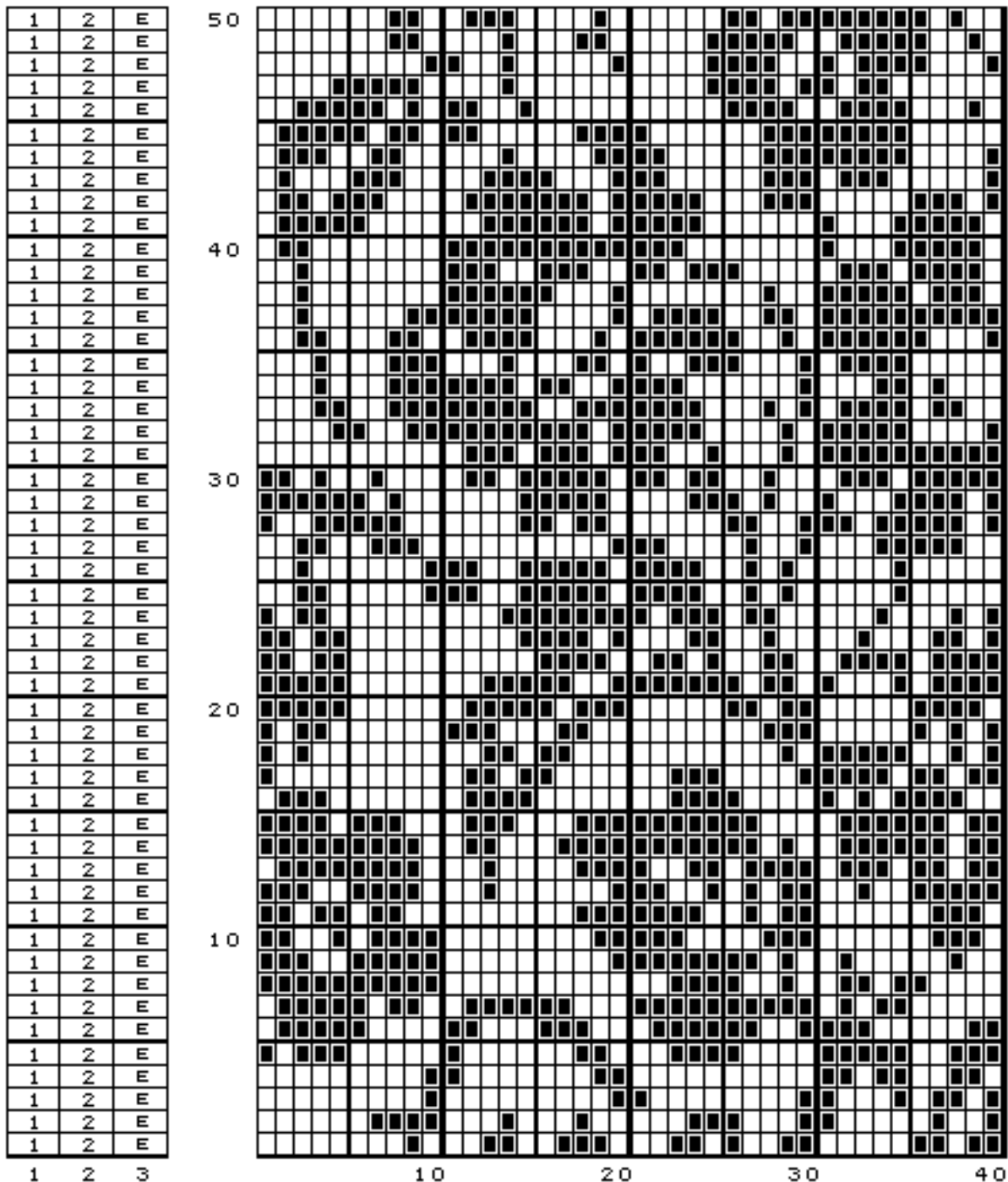
PPD Print

Multi Color Cartridge

The picture below shows the first page of the output captured for a Multi Color Cartridge.

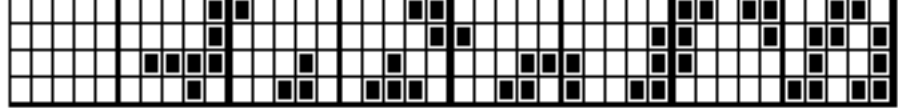
NUMMER EXTERNE GEHEUGEN = NUMMER EXTERNE PAGINA = PAGINANUMMER = 1
 PATROONNUMMER = 901 STEKEN = 60 TOEREN = 56
 PRINTVOLGORDE (1- 1)

KLEUR	1	2	3	4
TEKEN	□	■	⊗	=



1	2	E
1	2	E
1	2	E
1	2	E

1 2 3



10

20

30

40

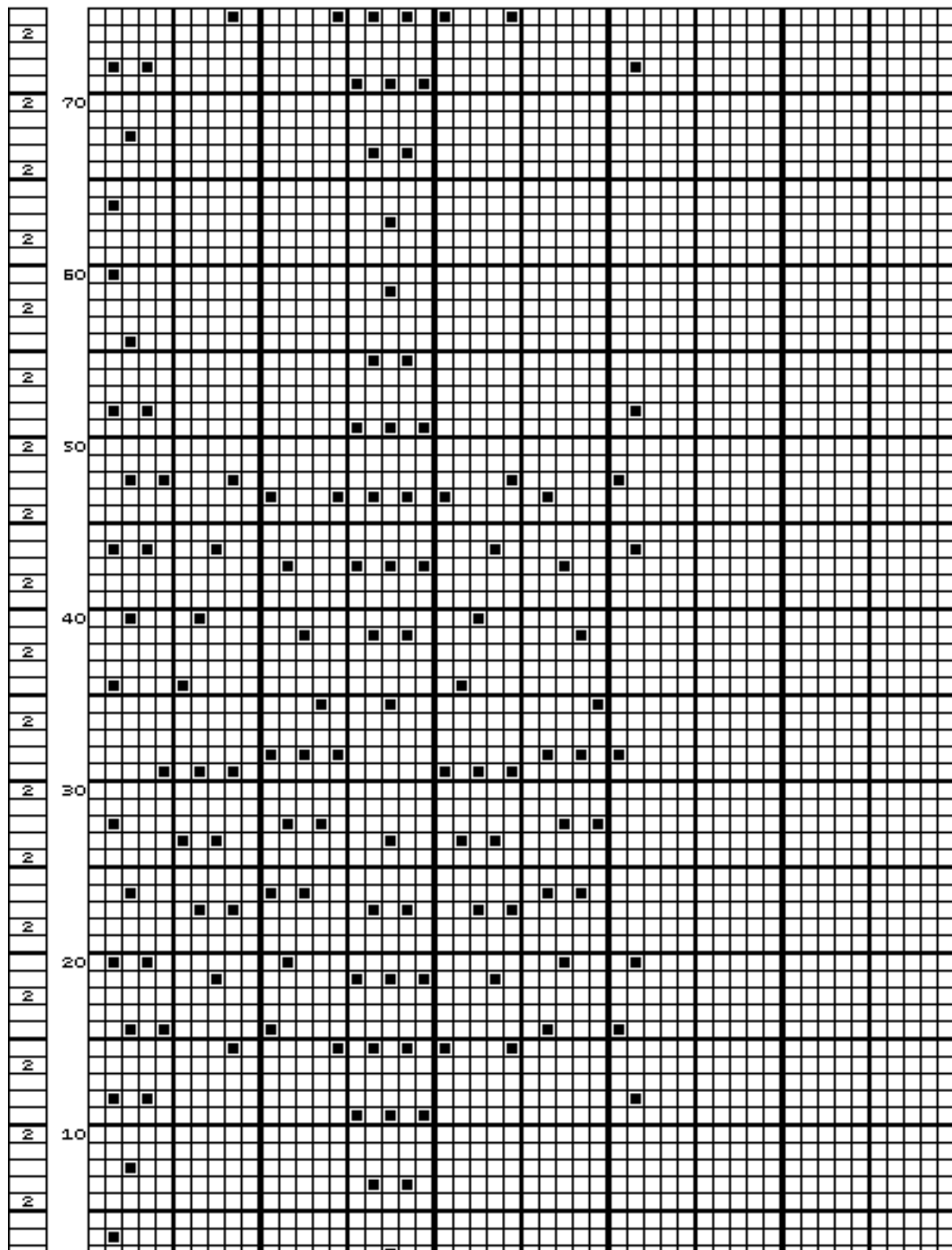
Last Modification: June 30, 2016 © 2005,2016 [Computerservice SSHS BV](#).

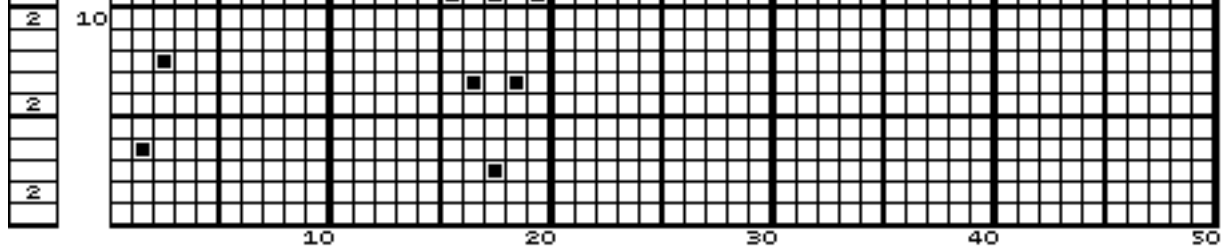
PPD Print

Lace Cartridge

The picture below shows the first page of the output captured for a Lace Cartridge in Data Pattern representation.

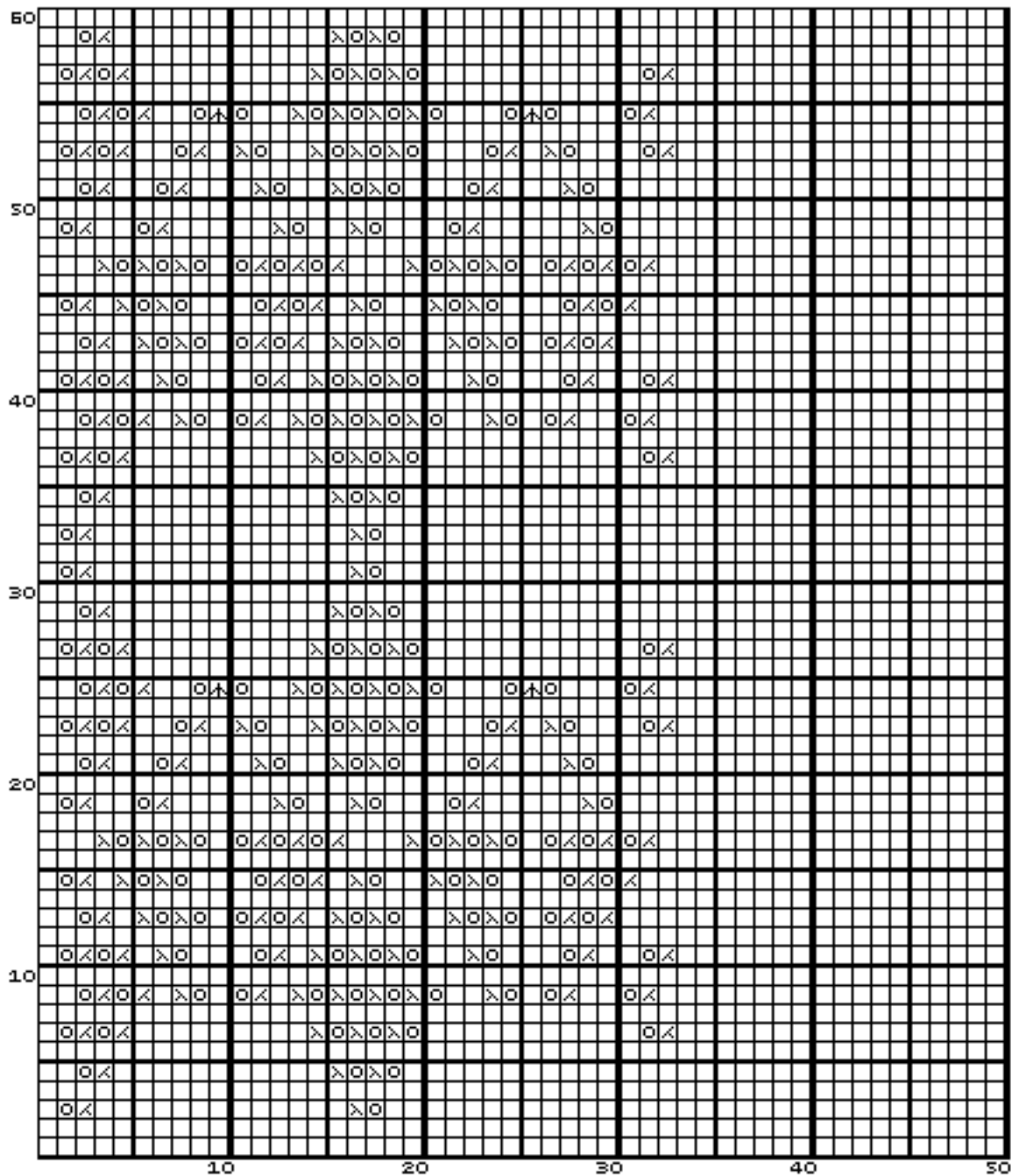
EXTERNAL MEMORY No. = EXTERNAL PAGE No. = PAGE No. = 1
PATTERN No. =902 STITCHES = 64 ROWS = 118
PRINTING ORDER (1- 1)





The picture below shows the first page of the output captured for a Lace Cartridge in Transfer Symbols representation.

EXTERNAL MEMORY No. = EXTERNAL PAGE No. = PAGE No. = 1
 PATTERN No. =902 STITCHES = 64 ROWS = 60
 PRINTING ORDER (1- 1)



- BLOCK No. 2 -

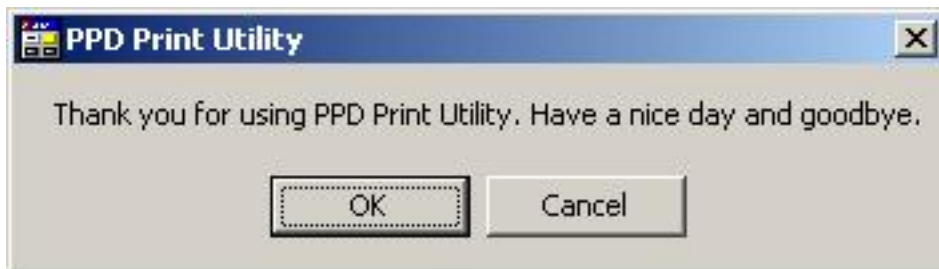
DISC No. = TRACK No. =
TOTAL ROW = 5
HOLDER POSITION : LEFT(2 4 6) RIGHT(1 3 5)
KNITTING RANGE : L SIDE NEEDLE R SIDE NEEDLE START ROW
 No.1 (L 100) (R 100) (1)
 No.2 (L 6) (L 5) (2)
BLOCK STOP
 (1 2 3 4 6 9999)
TOTAL YARN HOLDER KEEPER No.(1 2 3)
1) PATTERN No. = 902 D.B JACQUARD (2 COLOURS/ROW)
 STITCHES = 5 ROWS = 5
 START ROW = 1
 KNITTING ROWS (5)
 END NEEDLE SELECTION (FREE)
 ARRANGE (ALL OVER)
 NEEDLE No.
 (L 2)
* YARN HOLDER KEEPER No.(1 2 3)

Last Modification: December 5, 2019 © 2005,2019 [Computerservice SSHS BV.](#)

PPD Print

Close

A confirmation dialog is displayed when you close PPD Print Utility.

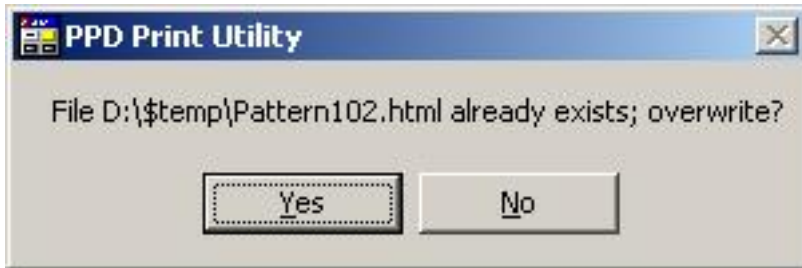


Press **Cancel** if you didn't want to close anyway.

PPD Print

Messages

You will get the following warning message when you start a capture and a successful recording by the same name exists.



If you press **No** the recording is not started. If you press **Yes**, existing files will be overwritten. Note: if you record less pages then in the previous recording, old pages may be left over.

Knit and Sew

Dialog Manager

Dialog Manager is, as its name suggests, a package that manages dialogs. Dialog Manager makes the life of the Windows dialog programmer easier by taking away the boring Windows dialog hassle, enabling the programmer to concentrate on user functionality.

Dialog Manager also provides additional functionality on top of the Windows dialog functionality. The visible additional features used in this application include:

- Hatched buttons: a button is dependent on the contents of one or more fields, where the fields don't meet the expectations of the button. The user can click a hatched button to find out which fields don't meet the expectation of the button.
 - Field coloring: when a button has the focus, fields on which the button depends are colored to show the user that user action is required.
 - Propagation: when a row in a table is selected, the fields in the row are propagated into individual fields.
-

Knit and Sew

Dialog Manager - Introduction

A Dialog Manager application presents you with one or more dialogs.

[Getting Help For a Dialog.](#)

A dialog can contain:

- [Buttons](#)
- [Single-line Fields](#)
- [Multi-line Fields](#)
- [TableBoxes](#)
- [TickBoxes](#)

You can use the mouse or the keyboard to navigate a dialog.

[Access Keys](#)

[Scroll Bar](#)

[Initial Focus and Tab Order](#)

[Coloring](#)

Knit and Sew

Dialog Manager - Buttons

A dialog normally contains an **OK** button, a **Cancel** button, and one or more action buttons. You can 'press' a button with a mouse click or with the keyboard:

- Pressing the **Enter** key is equivalent to pressing the default button, which is the button with a heavy dark border. The default button is the one that has the [focus](#), or, if no button has the focus, the one set up as the default. The Dialog Manager makes the last button pressed the default.
 - Pressing the spacebar is equivalent to pressing whichever button has a dotted rectangle around its text label.
 - If a button's label contains an underlined character, pressing the **Alt** key together with that character's key is equivalent to pressing that button.
-

Knit and Sew

Dialog Manager - Fields

A single-line field is for display or entry of a character string. When a Dialog first displays, a field in which you can enter text is usually empty, but in some cases it contains default text.

When a field allows you to enter text, you can click to place the cursor within the existing text and use the keyboard to edit it. The **Home** key moves the cursor to the beginning of the string, and the **End** key moves it to the end. The **Delete** key deletes characters following the cursor, and the **Backspace** key deletes characters before the cursor.

You can highlight text by dragging the cursor across it. The **Delete** key deletes highlighted text, and typing new text replaces highlighted text.

Knit and Sew

Dialog Manager - Multi Line Fields

A multi-line field is for display or entry of a character string. When a Dialog first displays, a field in which you can enter text is usually empty, but in some cases it contains default text.

When a field allows you to enter text, you can click to place the cursor within the existing text and use the keyboard to edit it. The **Home** key moves the cursor to the beginning of the string, and the **End** key moves it to the end. The **Delete** key deletes characters following the cursor, and the **Backspace** key deletes characters before the cursor.

You can highlight text by dragging the cursor across it. The **Delete** key deletes highlighted text, and typing new text replaces highlighted text.

Pressing **Control+Enter** moves the cursor to a new line.

Knit and Sew

Dialog Manager - TableBox

A TableBox displays a list of items. Scroll through the list using the scroll bar, and select an item in one of these ways:

- double click on it
- click on it and press **Enter**
- use the arrow keys to highlight it, and press the spacebar

The colour of the table changes on mouse-up (when the focus changes) and on mouse-down (when the selection changes). You can deselect a row by pressing the **Delete** key.

Knit and Sew

Dialog Manager - TickBox

A TickBox is used to enable or disable an option. The option is enabled when an X appears in the TickBox and disabled when the TickBox is empty.

Last Modification: December 10, 2004 © 1999-2004 [Computerservice SSHS BV](#).

Knit and Sew

Dialog Manager - Access Keys

An access key lets you use the keyboard to activate a [single-line field](#), [multi-line field](#), [Button](#), [TickBox](#), or [TableBox](#) in a dialog. When a character in the item's label is underlined, you can activate the item by pressing **Alt** together with the key corresponding to that character.

Last Modification: July 20, 2004 (c) Copyright 2004, [Jos Timmermans](#)

Knit and Sew

Dialog Manager - Scrollbar

A scrollbar appears at the right or bottom edge of a [TableBox](#) or [multi-line field](#) when its contents are not completely visible. Each scroll bar contains two scroll arrows and a scroll box that enable you to scroll through the contents of the TableBox or field.

Last Modification: December 10, 2004 © 1999-2004 [Computerservice SSHS BV](#).

Knit and Sew

Dialog Manager - Initial Focus and Tab Order

When a control is active, it is said to have the focus, which means that you can act on it. For example, if a field has the focus, you can type in it.

You can use the Tab key to move the focus and activate controls in a dialog. The tab order is the order in which controls become active when you use **Tab**. Using **Tab** is particularly useful and natural for moving from one text field to another.

Last Modification: December 10, 2004 © 1999-2004 [Computerservice SSHS BV](#).

Knit and Sew

Dialog Manager - Coloring

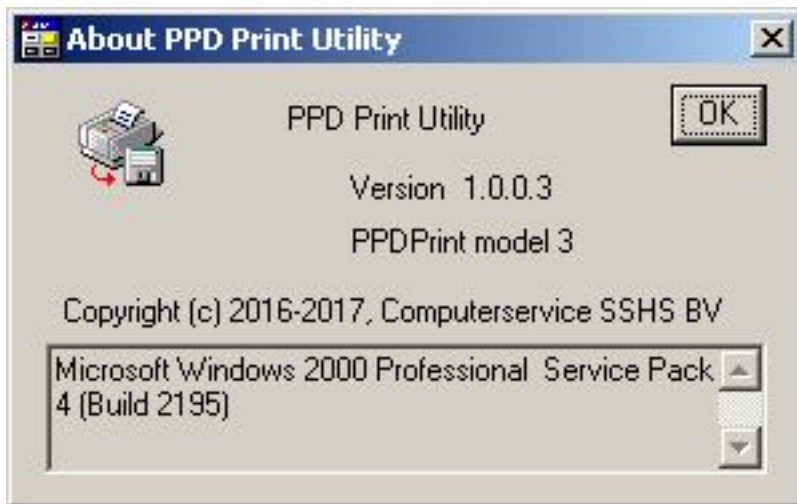
Coloring or hatching of fields, tables, or buttons occurs when some action is required before a button can be pressed. Read-only fields that are dependent on an unsatisfied button are hatched whenever the button is grayed.

Last Modification: December 10, 2004 © 1999-2004 [Computerservice SSHS BV](#).

PPD Print

About

The About dialog of PPD Print Utility provides version information.



You can see above the version of PPD Print Utility and the model number of the PPD Print device.

The bottom field display the version information for your version of Windows.

Knit and Sew

Dialog Manager - Get Help For a Dialog

When the Dialog Manager presents you with a dialog, you can get help by pressing F1. This displays a dialog where you can choose (when available):

- General displays this Help
- Forms displays Help for the application
- Field displays Help for the field that has the focus

You can also use the Forms key or Field key to go directly to the corresponding Help.

Last Modification: December 10, 2004 © 1999-2004 [Computerservice SSHS BV](#).